

DIMENSIONS TO FACE OF PARTITIONS ARE TO FACE OF STUD. FINISHES DEPICTED IN FINISH PLANS AND ELEVATIONS ARE NOT SHOWN ON PARTIAL FLOOR PLANS. REFER TO ENCL. 100, ELEVATIONS FOR FINISHES.

LOCATE DOOR OPENINGS "A" FROM NEAREST PERPENDICULAR WALL. FIRE AND SOUND RATED WALLS/PARTITIONS TO BE CONSTRUCTED TIGHT TO UNFINISHED CONCRETE, DUE TO THE NATURE OF CONCRETE, ALL GAPS FULLY SEALED. ALL WORK IS TO BE BRACKED TO STRUCTURE ABOVE.

WHERE PARTITIONS OF DIFFERENT FIRE RATINGS INTERSECT, THE HIGHEST RATED PARTITION SHALL CONTINUE THROUGH. MAINTAIN PARTITION FIRE RATING BEHIND INTERSECTING EXTENDING THROUGH TO NEXT PARTITION.

INSTALL BLOCKING IN PARTITIONS FOR CASEWORK, WALL MOUNTED EQUIPMENT, TRIM AND RELATED CONSTRUCTION.

AT ANY LOCATION WHERE AN INTERIOR WALL TERMINATES AT AN EXTERIOR STOREFRONT, INSTALL WALL MOUNT AT INTERSECTION OF WALL AND STOREFRONT.

SEE LIFE SAFETY PLANS FOR REQUIRED FIRE SEPARATION WALLS.

SEE SHEET A-01 FOR CONSTRUCTION SUBSYSTEMS AND PARTITION SCHEDULE.

SEE SHEET A-710 THROUGH A-713 FOR FINISH ELEVATIONS.

SEE SHEETS A-710 THROUGH A-804 FOR FINISH FLOORING, TRANSITIONS, PATTERNS AND WALL PROTECTION.

SEE SHEETS A-018 & A-802 FOR ENLARGED PLANS INDICATING ADDITIONAL DIMENSION AND PARTITION TYPES, ACCORDING TO THE TYPE OF PARTITION.

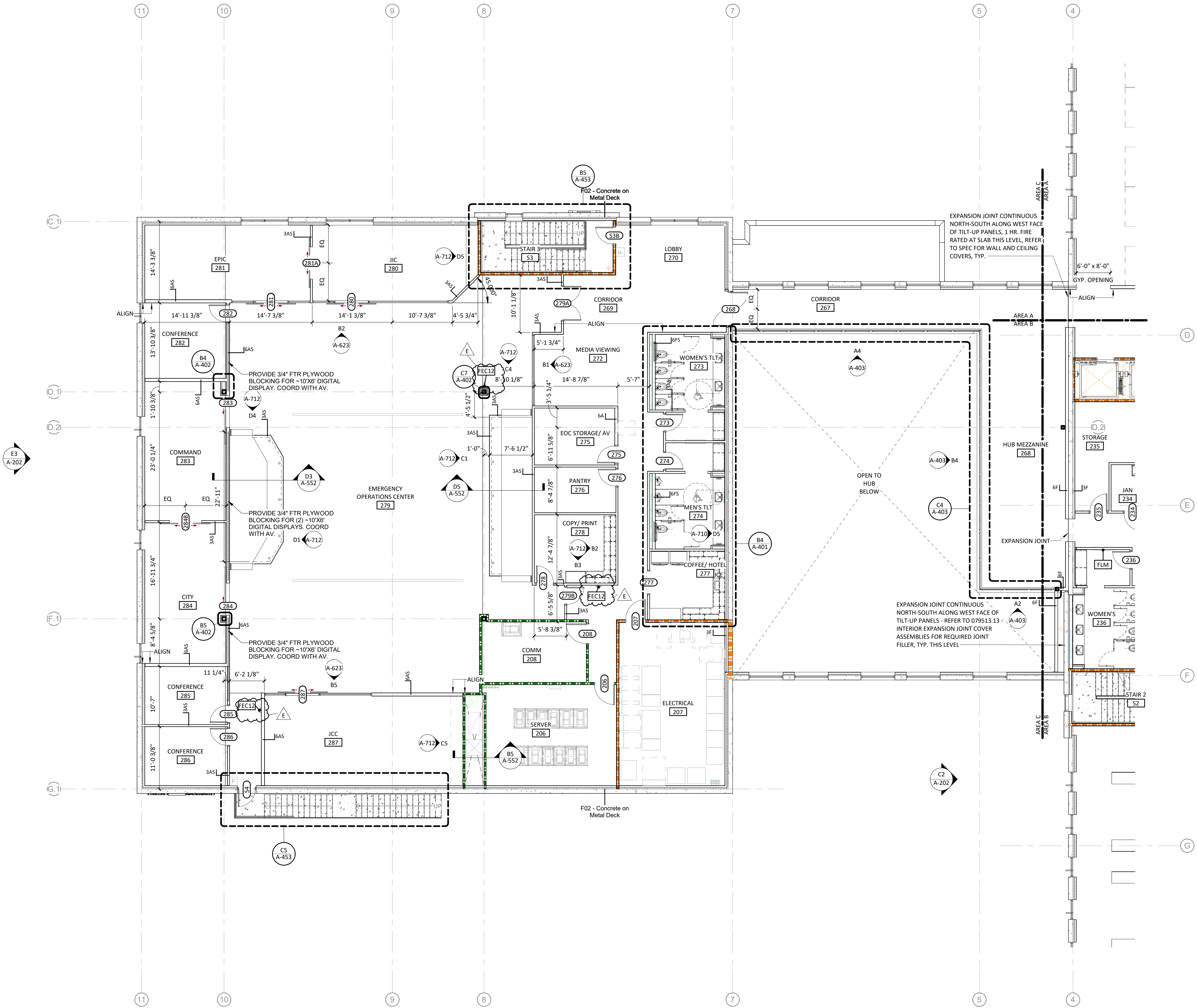
SEE STRUCTURAL DRAWINGS FOR SLAB DEPRESSIONS AND CUTOUTS.

WHERE STRUCTURAL STEEL MEMBERS ARE EXPOSED AND NOT CONCEALED W/ OTHER CONSTRUCTION, PAINT FINISH TO MATCH STOREFRONT CURTAIN WALL FRAME SYSTEMS.

GYPSUM WALL BOARD ON EXTERIOR WALLS IS PART OF CORE & SHELL SHEET.

INSTALL PT WOOD TRIMMING IN WALLS AT ALL SCREEN LOCATIONS. SEE AV DRAWINGS.

1. ALL NON-DESIGNATED PARTITIONS SHALL BE TYPE 3A.
2. THE BACKER BOARD SHALL BE USED IN ALL LOCATIONS TO RECEIVE THE FINISHES.
3. REFER TO THE SCHEDULE FOR THE FINISHES TO BE USED FOR LOCATIONS.
4. CONTRACTOR SHALL COORDINATE WITH MECHANICAL DUCTWORK PRIOR TO FABRICATION OF PARTITION WALLS.
5. SHOULD CONDITIONS OCCUR WHERE A WALL IS UNABLE TO GO STRAIGHT UP OR STRAIGHT DOWN TO THE TOP OF THE CEILING, ETC., THE PARTITION (GYPSUM BOARD AND FINISH) MAY JOG HORIZONTALLY ABOVE THE CEILING TO AVOID THE PROBLEM.
6. RATED WALL INTEGRITY SHALL BE MAINTAINED.
7. WHERE STUDIES EXTEND ABOVE THE FINISH CEILING FROM WALLBOARD AND SOUND ATTENUATION BLANKETS EXTEND JUST ABOVE THE FINISH CEILING, CAP OFF PARTITION FINISHES WITH A RUNNER CHANNEL WHEN CEILING PLENUM IS USED AS A RETURN AIR PLENUM.
8. DISPOSITIONAL CONFLICTS BETWEEN PARTITION TYPES AND THE ARCHITECTURAL FLOOR PLANS SHALL BE BROUGHT TO THE ATTENTION OF THE ARCHITECT.
9. SEE LIFE SAFETY PLANS FOR THE LOCATIONS OF SMOKE BARBERS, SMOKE PARTITIONS AND FIRE-RATED PARTITIONS.
10. REFER TO THE PARTITION FABRICATOR'S LITERATURE, I.E. FIRE RESISTANCE VOLUMES - CURRENT EDITION FOR SPECIFIC CONSTRUCTION REQUIREMENTS OF U.L. LISTED ASSEMBLIES.
11. REFER TO MECHANICAL, ELECTRICAL AND PLUMBING DRAWINGS FOR TYPICAL U.L. LISTED PENETRATIONS THROUGH FIRE-RATED ASSEMBLIES. CONTRACTOR SHALL BE RESPONSIBLE FOR PROVIDING APPROPRIATE PROJECT-SPECIFIC U.L. LISTED ASSEMBLIES FOR PENETRATIONS.
12. REFER TO DETAIL MECH. DWGS. FOR TYPICAL WALL FRAMING FOR FIRE DAMPERS IN WALLS.
13. COORDINATE WITH MECHANICAL CONTRACTOR FOR THE LOCATION OF FIRE DAMPERS IN MANUFACTURER. [COORDINATE ALL PARTITION CONSTRUCTION WITH MECHANICAL PRIME CONTRACTOR PRIOR TO COMMENCING PARTITION CONSTRUCTION].



THE LINE SHOWN ABOVE IS
EXACTLY ONE INCH LONG AT
THIS SHEETS ORIGINAL PAGE SIZE

E

D

C

B

A

12/22/2020 2:11:06 PM

A1
-102C

FLOOR PLAN- PARTIAL- LEVEL 2 - AREA C

1

2

3

4

5

6

1/8" = 1'-0"

GMP SET